

Božidar Đelić, Deputy Prime Minister of Serbia and Minister for Science and Technological Development, launched the “Blue Danube” National Supercomputing Initiative on 12 November 2008 at the Institute of Physics Belgrade.



Researchers from the Scientific Computing Laboratory of Institute of Physics host a meeting with a delegation from IBM, led by Vladimir Aninoiu, Director of Developing Markets from IBM Central and Eastern Europe, and Milos Đurković, IBM director of Serbia.



Steps that preceded the signing of the Memorandum of Understanding between the IPB and IBM: installation of Blade server, provided by IBM business partner BTR, at the Scientific Computing Laboratory; participation of Scientific Computing Laboratory researchers at the *Scientific POWER* conference held in Poland; professional training courses organized by IBM.



PARADOX - computer cluster at the Scientific Computing Laboratory of the Institute of Physics, precursor of the **Blue Danube** supercomper.



SIGNING OF THE MEMORANDUM OF UNDERSTANDING BETWEEN THE INSTITUTE OF PHYSICS BELGRADE AND IBM SERBIA

Institute of Physics Belgrade
9 June 2009



Institute of Physics Belgrade

The IPB was founded with a mission to conduct a quality R&D program in the wider field of physical sciences and related technologies. For half a century IPB has successfully realized this mission. IPB's 170 tenured researchers and technicians, and the growing number of PhD students are responsible for 10% of Serbia's total scientific production. The Institute of Physics Belgrade is recognized as one of the leading R&D institutions in South East Europe, and its campus on the Danube River is host to the region's greatest concentration of research groups and laboratories that have been designated as EU Centers of Excellence. IPB's strategic developmental plan is built on three basic pillars: international cooperation, advanced education and training of young researchers, and reintegration of key experts from abroad. IPB has marked expertise at both European and regional levels in the fields of High Performance Computing and the development and use of e-Infrastructures. IPB coordinates Serbia's National supercomputing Initiative.



IBM - International Business Machines d.o.o.

IBM is a global leader in the field of development and production of advanced information technologies. The company offers complete IT business solutions starting from strategic analysis, system integration, networking with its academic and business partners. IBM's global services enable its clients to employ cutting-edge solutions that are based on the exchange of know-how and expertise in fields such as: global and national economies, telecommunication, banking, industry, government, the public sector.

IBM is present in Serbia through IBM d.o.o. which currently employs 80 young experts trained at IBM education centers in throughout the world for work in the field of emerging technologies employing modern business practices. The key point of IBM's strategy in Serbia is cooperation with business partners that will result in the procuring of access to leading conditions and IT standards.

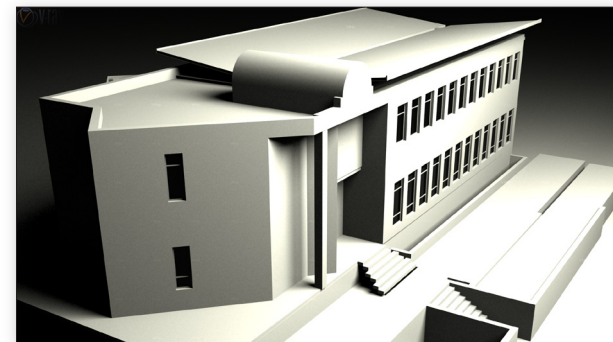
Institute of Physics Belgrade, Scientific Computing Laboratory
<http://www.scl.rs>

IBM - International Business Machines d.o.o.
<http://www.ibm.com/rs>

Academic Partnership

The partnership between the Institute of Physics Belgrade, the coordinating institution of the "Blue Danube" National Supercomputing Initiative, and IBM Serbia has resulted from the identified need for joint collaboration towards the realization of key research, developmental and educational aspects of that national initiative. In particular:

- Exchange of ideas and experiences related to research and development on new IT architectures and platforms, with special emphasis to applications in physics and related sciences;
- Testing, optimization and porting to novel IT architectures and platforms of scientific applications and libraries relevant to the Institute, as well as to the Serbian high performance computing community;
- Testing and assessment of IBM hardware and software solutions from the point of view of scientific applications relevant to the Institute;
- Mediating and establishing of collaboration related to the scope of this Memorandum between Institute and other IBM partners within the Academic Initiative;
- Practical usage of IBM products during the practical and theoretical courses held at the Institute;
- Additional training courses for Institute's PhD students and researchers;
- Joint organization of meetings, seminars and conferences related to the scope of this Memorandum, as well as participation of each Party in relevant meetings, seminars and conferences organized by the other Party.



Future venue of the National Supercomputing and Data Storage Facility to be located on IPB's Danube campus.